

**This file provides outbound only *and* inbound/outbound configuration instructions for setting up the Xten Softphone to work with Go2Call Service.** Before you begin this process, please make sure that you have a valid Go2Call PIN.

▶ **STEP 1** Click on the Softphone's Menu button as shown below.



▶ **STEP 2** Double Click on “System Settings”

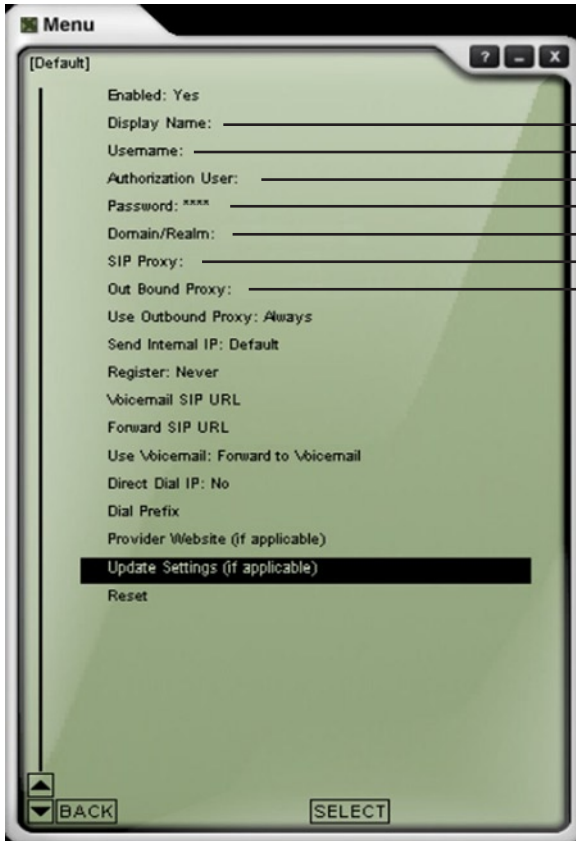


**STEP 3** Double click on SIP Proxy (shown highlighted below).



## Xten Softphone Configuration Outbound Only Instructions

**STEP 4** Choose which configuration option you would like from the table below and fill in the fields marked on the configuration screen accordingly.



**See  
Table  
Below**

	Outbound Only	Inbound/Outbound with calling features enabled	Basic Inbound/Outbound with no calling features
<b>Display Name:</b>	Your Name	Your Name	Your Name
<b>User Name:</b>	Your Go2Call PIN	Your Go2Call VDID	Your Go2Call DID
<b>Authorization User:</b>	Your Go2Call PIN	Your Go2Call VDID	Your Go2Call DID
<b>Password:</b>	Leave blank	auth_code	Your Go2Call DID Password
<b>Domain/Realm:</b>	sip02.go2call.com	If you use the US PoP, use: pbx02us.go2call.com " " Brazil PoP, use: pbx01br.go2call.com " " Singapore PoP, use: pbx01ap.go2call.com	sipproxy.go2call.com
<b>Sip Proxy</b>	sip02.go2call.com	If you use the US PoP, use: pbx02us.go2call.com " " Brazil PoP, use: pbx01br.go2call.com " " Singapore PoP, use: pbx01ap.go2call.com	sipproxy.go2call.com
<b>Out Bound Proxy:</b>	sipnt.go2call.com:5070	If you use the US PoP, use: alg02us.go2call.com:5070 " " Brazil PoP, use: alg01br.go2call.com:5070 " " Singapore PoP, use: alg01ap.go2call.com:5070	sipnt.go2call.com:5070



## Xten Softphone Configuration Inbound/Outbound Instructions

- ▶ **STEP 5** After you have filled in your configuration with one set of values from the table on page 4, make sure that all the other values match those in the screen shot.
- ▶ **STEP 6** Click on the "Update Settings" menu item (it is highlighted in black on the previous page and save.
- ▶ **STEP 7** Close your Xten and reopen.
- ▶ **STEP 8** You should see "Logged in" on your Xten screen. If not, please follow the instructions again.