

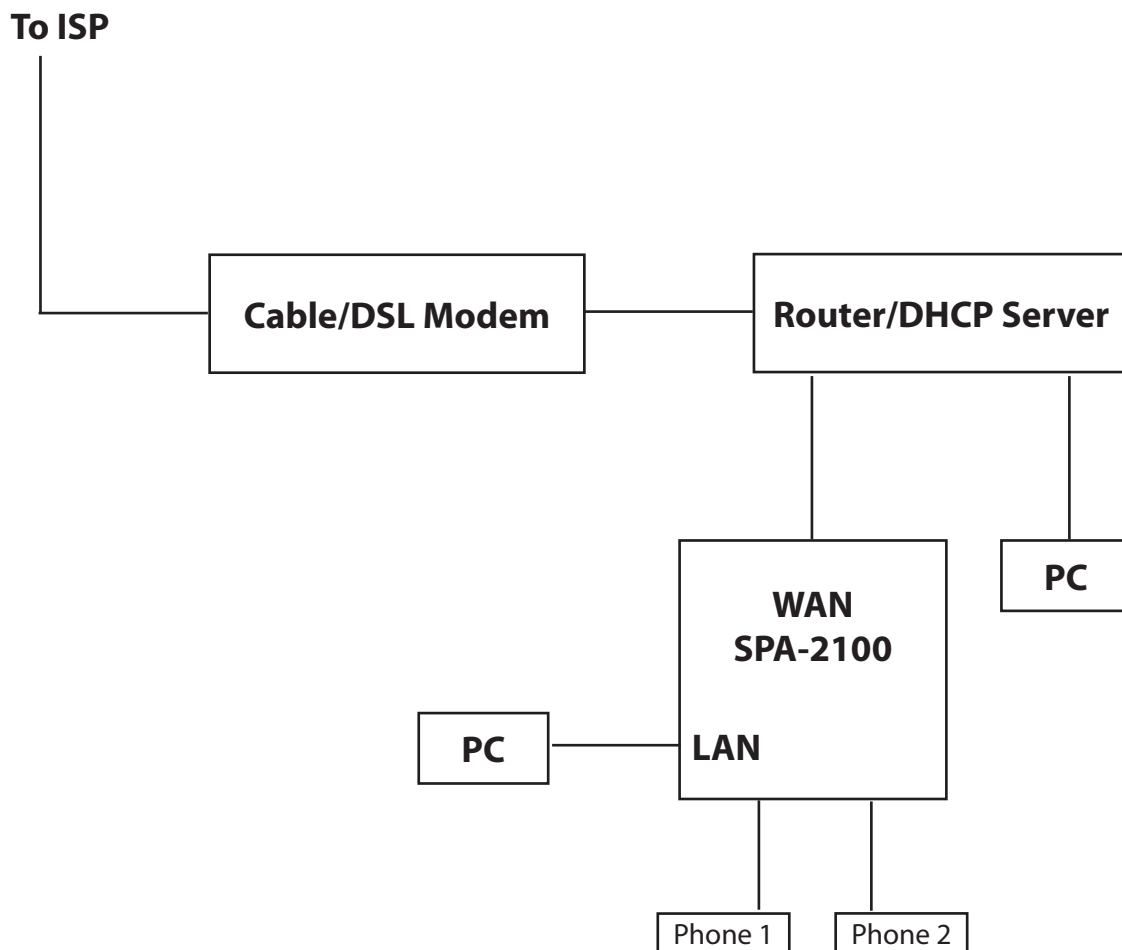


Sipura SPA-2100 Router Manual Configuration Introduction & Table of Contents

The SPA-2100 is a router and VOIP/SIP adapter. This file includes instructions for connecting your SPA-2100 to your network and configuring the device to work with Go2Call service.

- ▶ **pg. 2** Connecting the SPA-2100
- ▶ **pg. 3** Assigning a static IP to the SPA-2100 (only if your local LAN or ISP does not support DHCP)
- ▶ **pg. 4** Manually Configuring your SPA-2100 to work with Go2Call service

Connect the SPA-2100 WAN interface to your router. Do not connect anything to the LAN interface. Follow the diagram below to make sure that your PC and SPA-2100 are connected correctly. Please be aware that you can connect your PC to the Internet through the external router or through the SPA-2100, or you can connect a PC to each one. After connecting, make sure you are able to use your PC to browse the Internet. **Go2Call is not responsible for router configuration problems. If problems arise with router functions, please contact your device manufacturer.**



Please move on to the configuration instructions on page 4. If your local LAN or ISP does not support DHCP, first follow the instructions on page 3 to assign a static IP to your SPA-2100.

If your local LAN or your ISP does not support DHCP, you can assign a static IP to the SPA-2100 WAN interface by following these steps.

Please Note: You should not follow these instructions if you have DHCP.

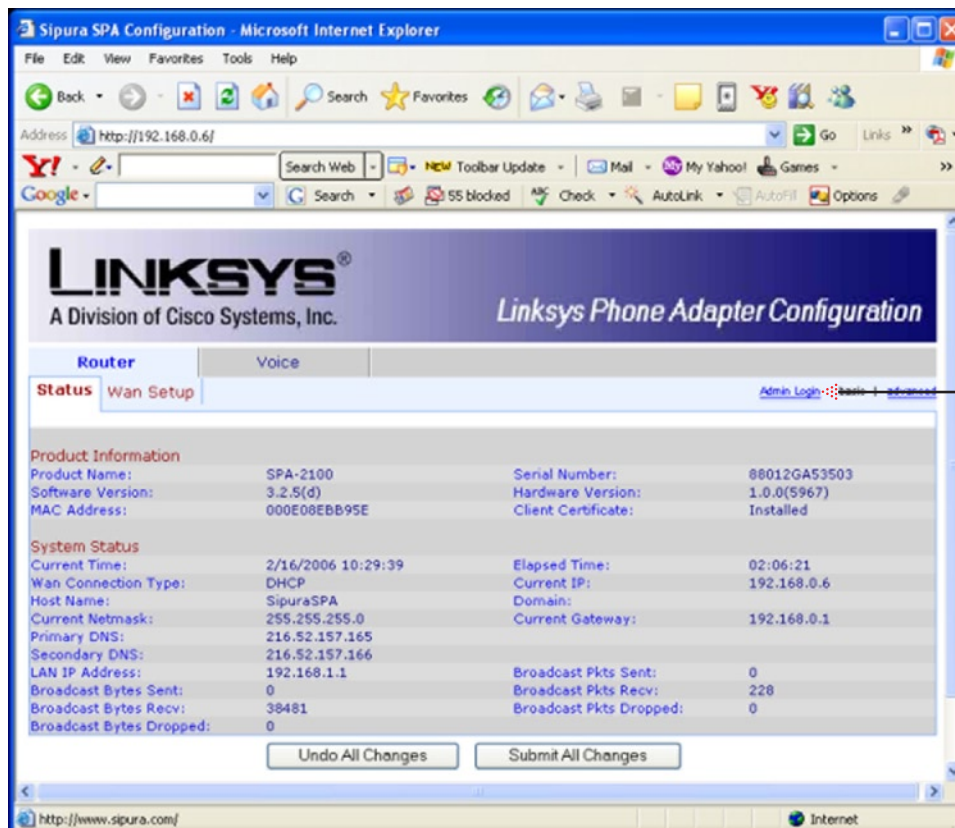
1. Obtain the IP Address, Default Gateway and Subnet Mask of your local network/LAN.
2. Pick up the receiver of the phone connected to the adaptor, and dial * * * *. You will hear a voice prompt saying "Sipura configuration menu."
3. Press the keys **1 0 1 #** on your analog phone to access the Static IP configuration menu and press **1 #** to disable DHCP. Then press **1** to save the setting.
4. Press **1 1 1 #** to access the IP Address Menu.
5. Enter your IP Address followed by # (e.g., 1 2 3 * 4 5 * 6 7 * 8 9 # would represent the IP 123.45.67.89). Press **1** to save this setting.
6. Press **1 2 1 #** to access the Subnet Mask Menu.
7. Enter your Subnet Mask followed by # (e.g., 1 2 3 * 4 5 * 6 7 * 8 9 # would represent the Subnet Mask 123.45.67.89). Press **1** to save this setting.
8. Press **1 3 1 #** to access the Default Gateway Menu.
9. Enter your Default Gateway followed by # (e.g., 1 2 3 * 4 5 * 6 7 * 8 9 # would represent the Gateway 123.45.67.89). Press **1** to save the setting.
10. Enter your ISP or Local DNS Server Names. Please fill in both primary and secondary DNS IP addresses. If you do not have a DNS server IP, please use 216.52.157.165 as Primary and Secondary DNS Server IP Address.

After you have completed these instructions, please move on to the following page to configure your Sipura SPA-2100 to work with Go2Call service.

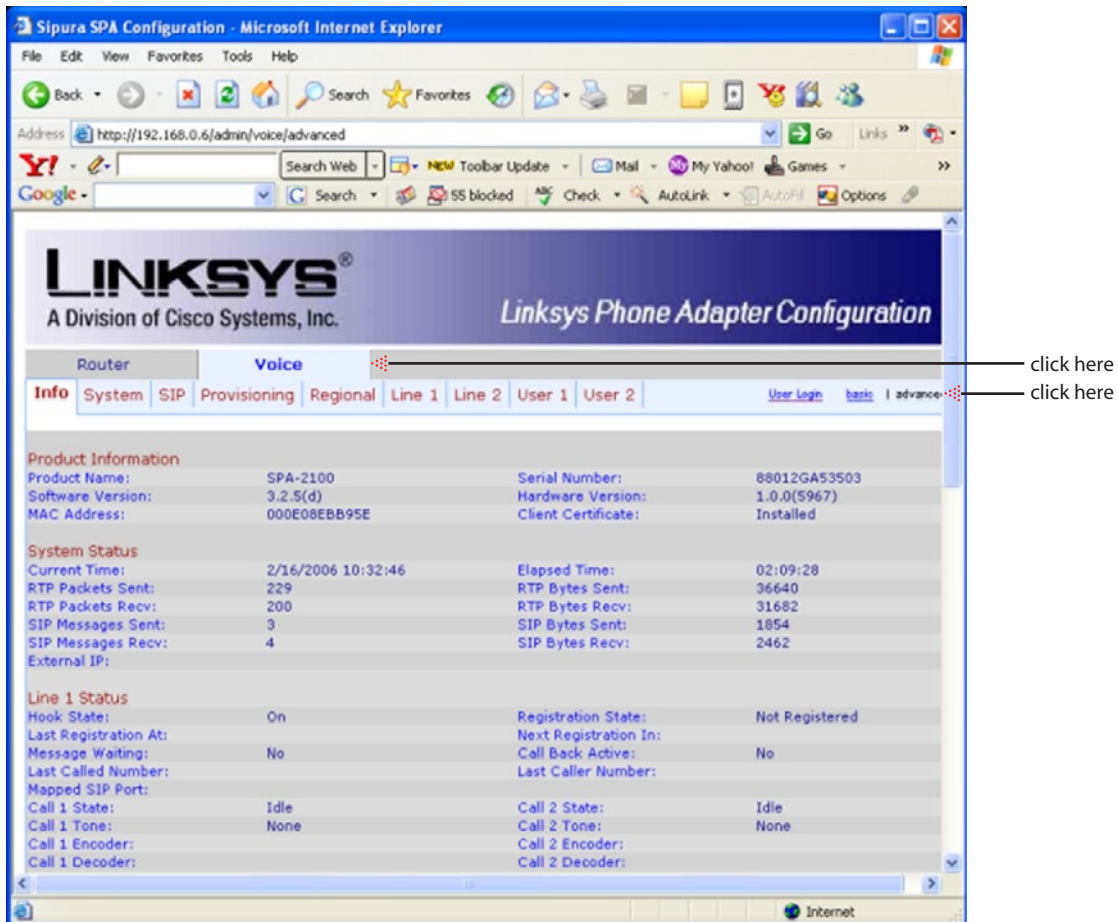
Now that you have connected your Sipura SPA-2100 according to your needs, you should be prepared to configure the SPA-2100 to work with Go2Call service. Please complete the following instructions, referring to the included screen shots as necessary.

Please Note: This configuration assumes that your router and ISP support DHCP. If they do not and you have not already assigned a static IP to the SPA-2100, please complete the instructions on page 3.

- ▶ **STEP 1** Pick up the phone connected to line1 of the SPA-2100 and dial ****110#.
- ▶ **STEP 2** The local IVR will dictate your SPA WAN IP address. Write this down and hang up the phone.
- ▶ **STEP 3** Pick up the phone and dial ****7932#. The IVR will prompt "enter value followed by pound key." Enter 1# on the phone. The IVR will prompt "to save press 1." Press 1 and the value will be saved. Hang up the phone.
- ▶ **STEP 4** Go to the web browser on your PC and enter http://ipaddress (ipaddress is the one written down during step 2). This should bring up the Sipura/Linksys configuration screen like the one shown below. If the web browser is not able to get this page, please check your connections and repeat these steps



- STEP 5** Once the SPA-2100 configuration page appears, click on “Admin Login” (shown with arrow on previous page) and then on the “advanced” hyperlink (shown with arrow below). Then click on the “Voice” tab (shown with arrow below). The following page will appear.



click here

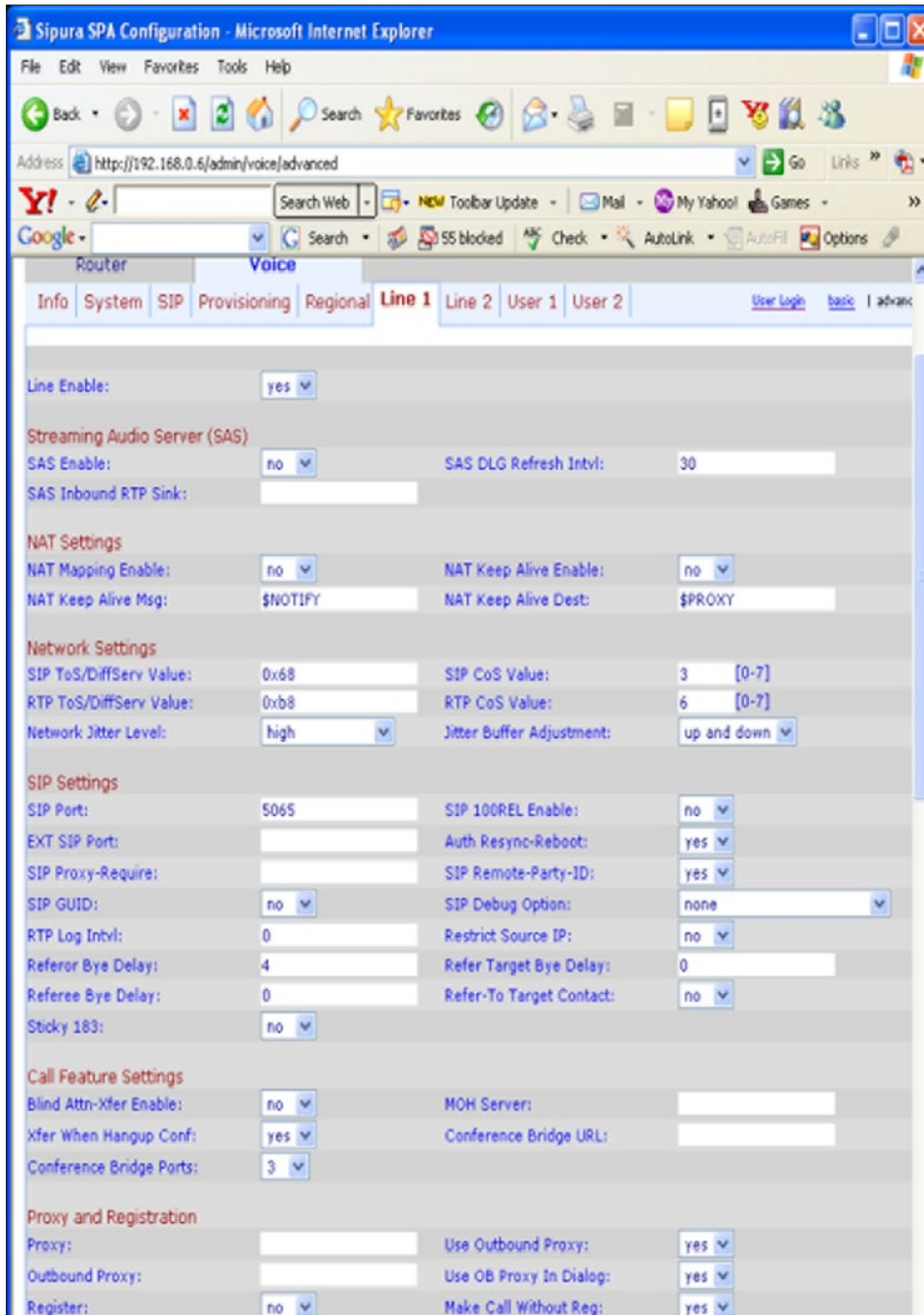
click here

- STEP 6** Now click on the “Line 1” tab (shown below) under “Voice.” You will see the a configuration page like the one pictured in the screen shot on the following page. Please use one of the configuration options given in the tables on pages 7 and 8 to configure device for voice.



click here

Please note that this is only an example configuration, and the values on your screen may look different, depending on which configuration you choose. You will find different configuration options on pages 7 and 8.



Section	Parameter	Value
Line Enable	Line Enable:	yes
	Streaming Audio Server (SAS)	
SAS	SAS Enable:	no
	SAS DLG Refresh Intvl:	30
NAT Settings	NAT Mapping Enable:	no
	NAT Keep Alive Enable:	no
	NAT Keep Alive Msg:	\$NOTIFY
	NAT Keep Alive Dest:	\$PROXY
Network Settings	SIP ToS/DiffServ Value:	0xb8
	RTP ToS/DiffServ Value:	0xb8
	Network Jitter Level:	high
	SIP CoS Value:	3 [0-7]
SIP Settings	SIP Port:	5065
	EXT SIP Port:	
	SIP Proxy-Require:	
	SIP GUID:	no
	RTP Log Intvl:	0
	Referor Bye Delay:	4
	Referee Bye Delay:	0
	Sticky 183:	no
	SIP 100REL Enable:	no
	Auth Resync-Reboot:	yes
Call Feature Settings	Blind Attn-Xfer Enable:	no
	Xfer When Hangup Conf:	yes
	Conference Bridge Ports:	3
Proxy and Registration	Proxy:	
	Outbound Proxy:	
	Register:	no
	Use Outbound Proxy:	yes

- ▶ **STEP 7** Now choose the configuration type of your choice and fill in your screen accordingly. Do not change any values other than those mentioned below. The other default values on your screen need to stay unchanged in order for the configuration to work properly.

OPTION 1: Outbound Dialtone (No IVR) Configuration

SIP Port:	5065
Proxy:	sip02.go2call.com
Outbound Proxy:	sipnt.go2call.com:5070
Register:	no
Make calls without Reg:	yes
Use Outbound Proxy:	yes
Display Name:	Type Your Name
User ID:	Type in Go2Call PIN
Use Auth Id:	yes
Auth Id:	Type in Go2Call PIN
Preffered Codec:	G729a
Dial Plan:	Factory Default

OPTION 2: Outbound IVR Configuration

SIP Port:	5065
Proxy:	voip02.go2call.com
Outbound Proxy:	sipnt.go2call.com:5070
Register:	no
Make Calls without Reg:	yes
Use Outbound Proxy:	yes
Display Name:	Type Your Name
User ID:	Type in Go2Call PIN
Use Auth ID:	yes
Auth ID:	Type in Go2Call PIN
Preffered Codec:	G729a
Dial Plan:	For English IVR: S0:723 For French IVR: S0:999 For Polish IVR: S0:666 For Spanish: S0:333



Sipura SPA-2100 Router Manual Configuration

OPTION 3: Inbound/Outbound Configuration with full calling features enabled

SIP Port:	5065
Proxy:	If you use the US PoP, use pbx02us.go2call.com " " Brazil PoP, use pbx01br.go2call.com " " Singapore PoP, use pbx01ap.go2call.com
Outbound Proxy:	If you use the US PoP, use alg02us.go2call.com:5070 " " Brazil PoP, use alg01br.go2call.com:5070 " " Singapore PoP, use alg01ap.go2call.com:5070
Register:	yes
Make calls without Reg:	no
Use Outbound Proxy:	yes
Display Name:	Type Your Name
User ID:	Type in Go2Call VIDID
Password:	
Use Auth Id:	yes
Auth Id:	Type in Go2Call VIDID
Preffered Codec:	G729a
Dial Plan:	Factory Default

OPTION 4: Basic Inbound/Outbound Configuration with Go2Call DID. Please note that this is an older Inbound/Outbound configuration that does not include calling features.

SIP Port:	5065
Proxy:	sipproxy.go2call.com
Outbound Proxy:	sipnt.go2call.com:5070
Register:	yes
Make Calls without Reg:	no
Use Outbound Proxy:	yes
Display Name:	Type Your Name
User ID:	Type in Go2Call DID
Password:	Type in your DID password
Use Auth ID:	yes
Auth ID:	Type in Go2Call DID
Preffered Codec:	G729a
Dial Plan:	Factory Default